



This monthly newsletter summarizes activities related to the Arkansas Valley Conduit and is made available to the Southeastern Colorado Water Conservancy District Board of Directors and Arkansas Valley Conduit stakeholders. To request a subscription to the Report, please contact [info@secwcd.com](mailto:info@secwcd.com) or view it at <https://www.secwcd.org/>



### AVC Committee

The Arkansas Valley Conduit Committee will meet at 10 a.m. Thursday, April 24, at Southeastern Colorado Water Conservancy District offices, 31717 United Avenue, Pueblo, CO.

View Online at:

<https://us02web.zoom.us/j/86755018383>  
Meeting ID: 867 5501 8383

### Future meetings in planning stages

The Enterprise is in the process of planning future meetings with stakeholders, and these will be announced as details become available.

### Want to learn more about the AVC?

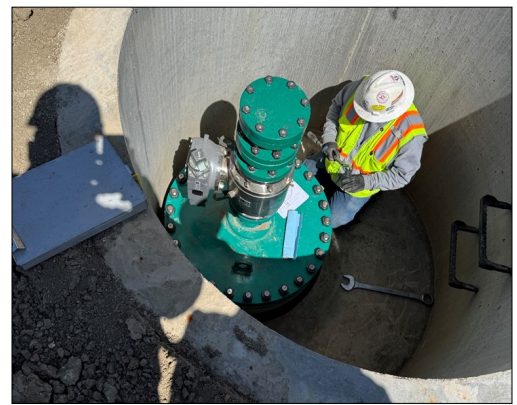
If your organization would like a presentation on AVC, contact Chris Woodka, 719-289-0785 or email [chris@secwcd.com](mailto:chris@secwcd.com)

## AVC Construction/Design Updates

There are currently three active Bureau of Reclamation contracts being administered. Boone Reach 1, Boone Reach 2 and the Injection Site.

Crowley Reach 1 is ready to advertise as soon as a licensing agreement is reached with all of the Restoration of Yield (ROY) Group participants. The ROY Group owns a reservoir site east of Boone, and Reclamation needs an agreement for permanent access.

Design to Regulating Tank 1, north of Fowler, is progressing with plan development with the latest version review due May 5.



#### Boone Reach 1:

The contractor, WCA has finished laying all of the pipe for this Reach. The company is now installing air/vacuum breakers, blow off valves and sectionalizing valves. They are anticipating to be done in July. Photos show work near the U.S. 50-Highway 96 PuebloPlex interchange.

Continued on Page 2



### Boone Reach 2:

Pate Construction continues working on elements of work that they can. As previously reported, utility re-locates on each end of the project have caused delays for Pate to continue with laying pipe. To date Pate has laid pipeline to just west of Boone. While waiting for Xcel to do the re-locate, Pate has started at State Highway 209 and is laying back to the west. On the west end of the project, Pate has reached an agreement with the Reclamation to front the money to have Xcel Energy re-locate the gas line (approximate cost \$600,000). Completion is expected in August.



### Injection Site:

Thalle continues to have administrative issues with the Injection site contract and is behind schedule. Reclamation is meeting regularly with Thalle management to correct deficiencies. Work has started on site with the excavation of foundation for the emergency generator and outlet wall for the detention pond. Excavation for the building will not start for several months.

## Read past newsletters

For Past issues of the AVC Report go to:

<https://www.secwcd.org/>

Water

AVC Report Newsletter



AVC Report Newsletter...click here

