

RECLAMATION

Managing Water in the West

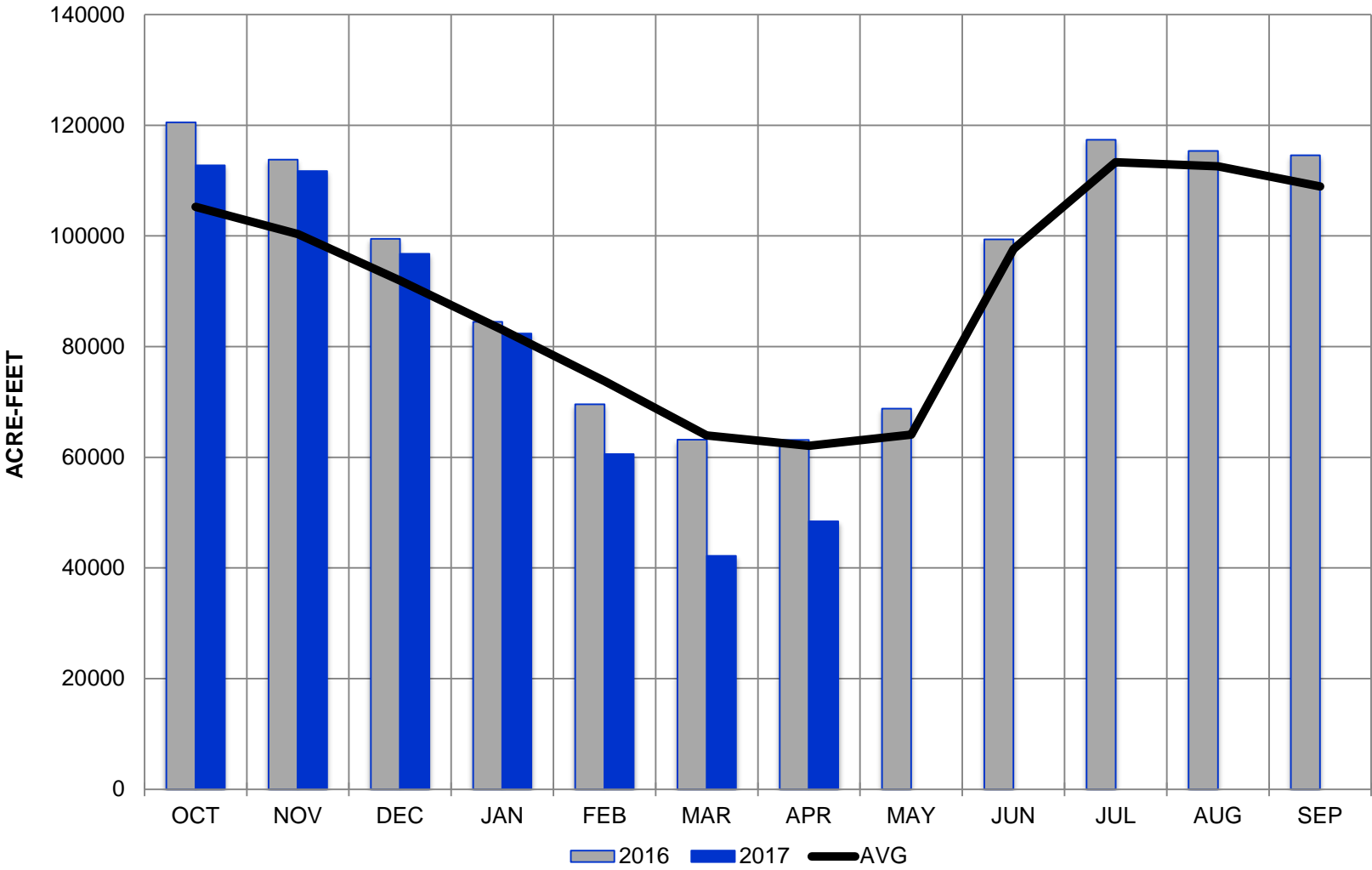
As of April 16, 2017

- 239,733 a/f stored in Pueblo
- 156,571 a/f of Project water
- 33,832 a/f of excess capacity water
- 49,042 a/f of winter water
- 88,802 a/f of Project space in Pueblo
- 69,263 a/f of Project space in Twin & Turquoise

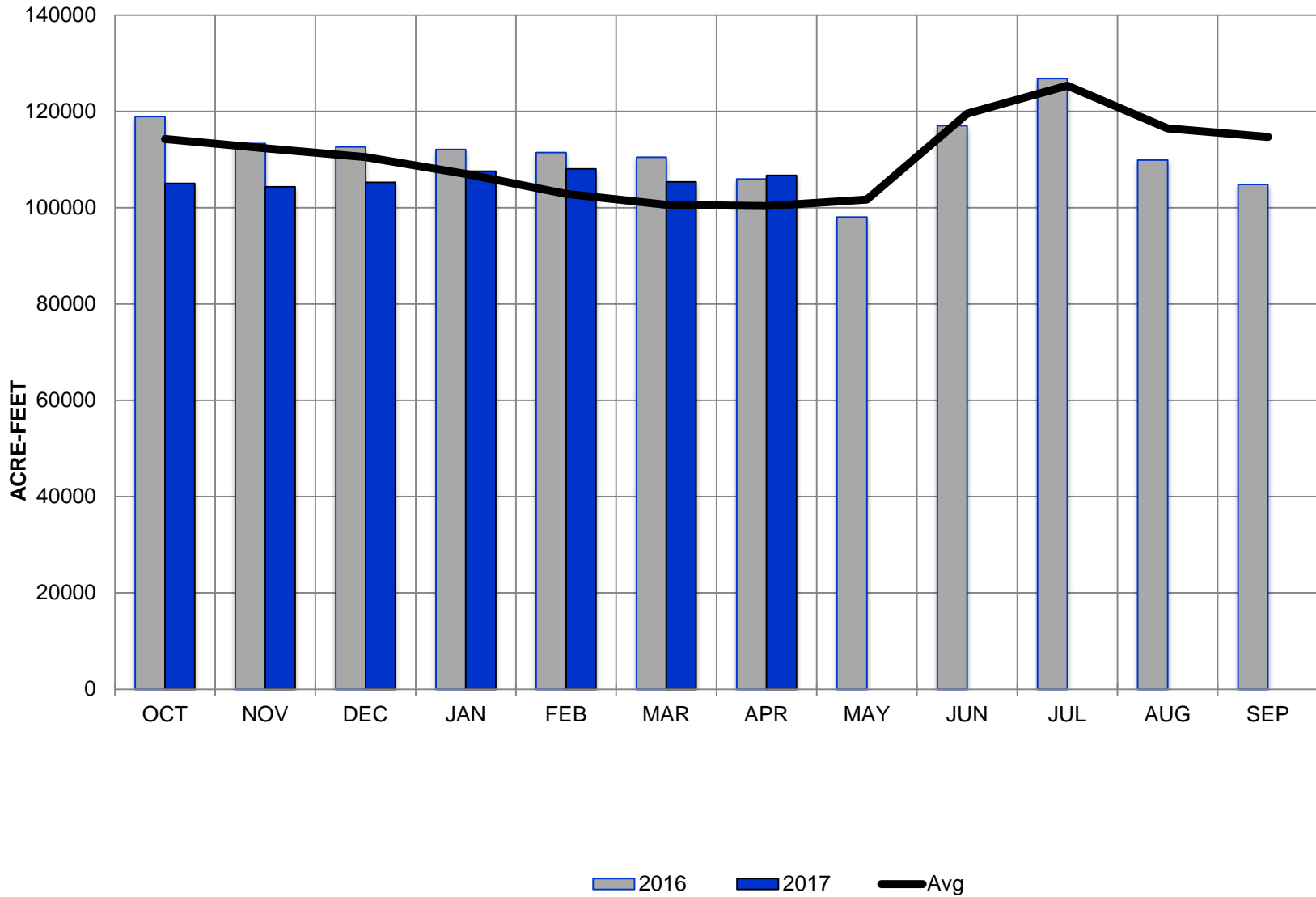


U.S. Department of the Interior
Bureau of Reclamation

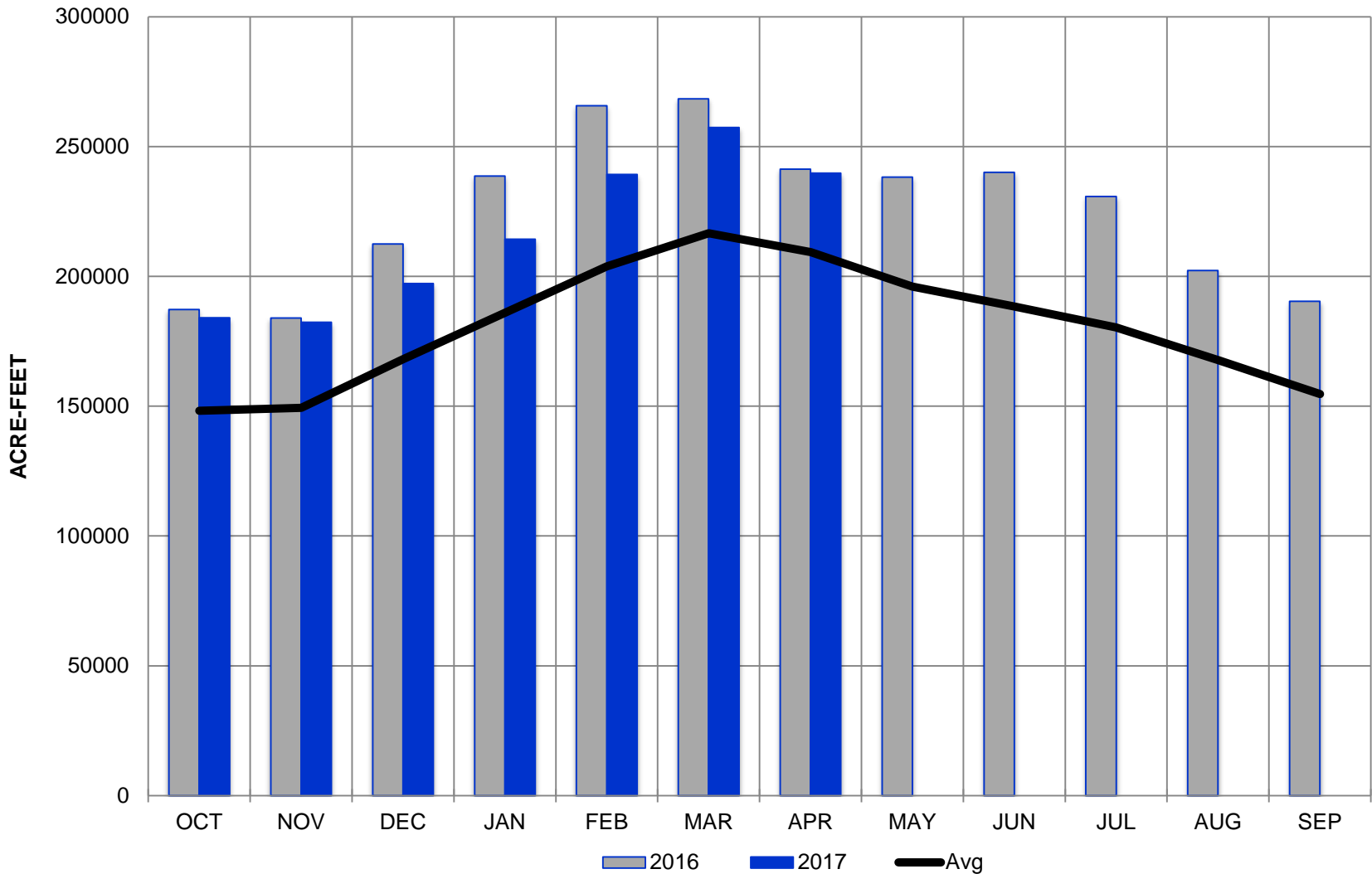
TURQUOISE LAKE

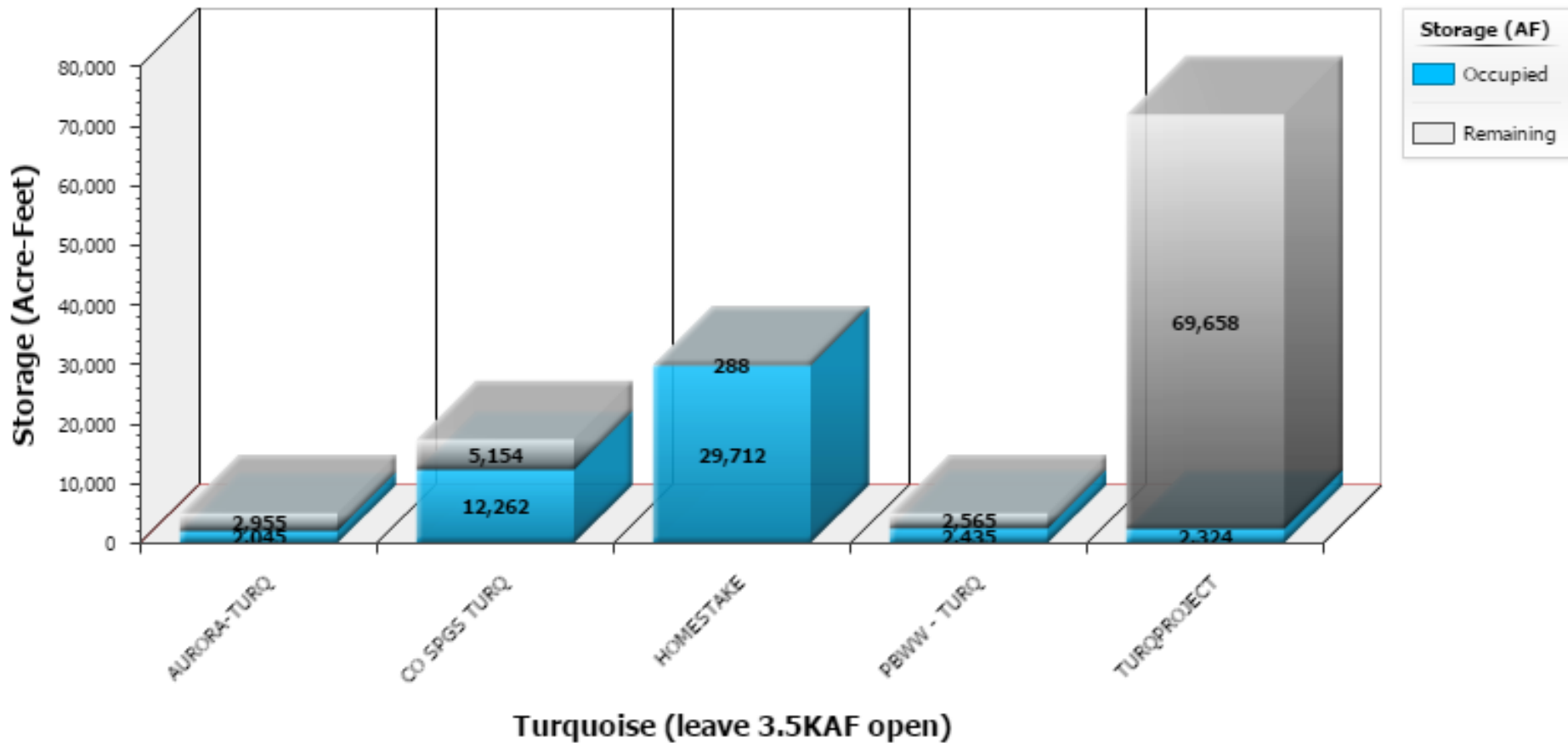


TWIN LAKES

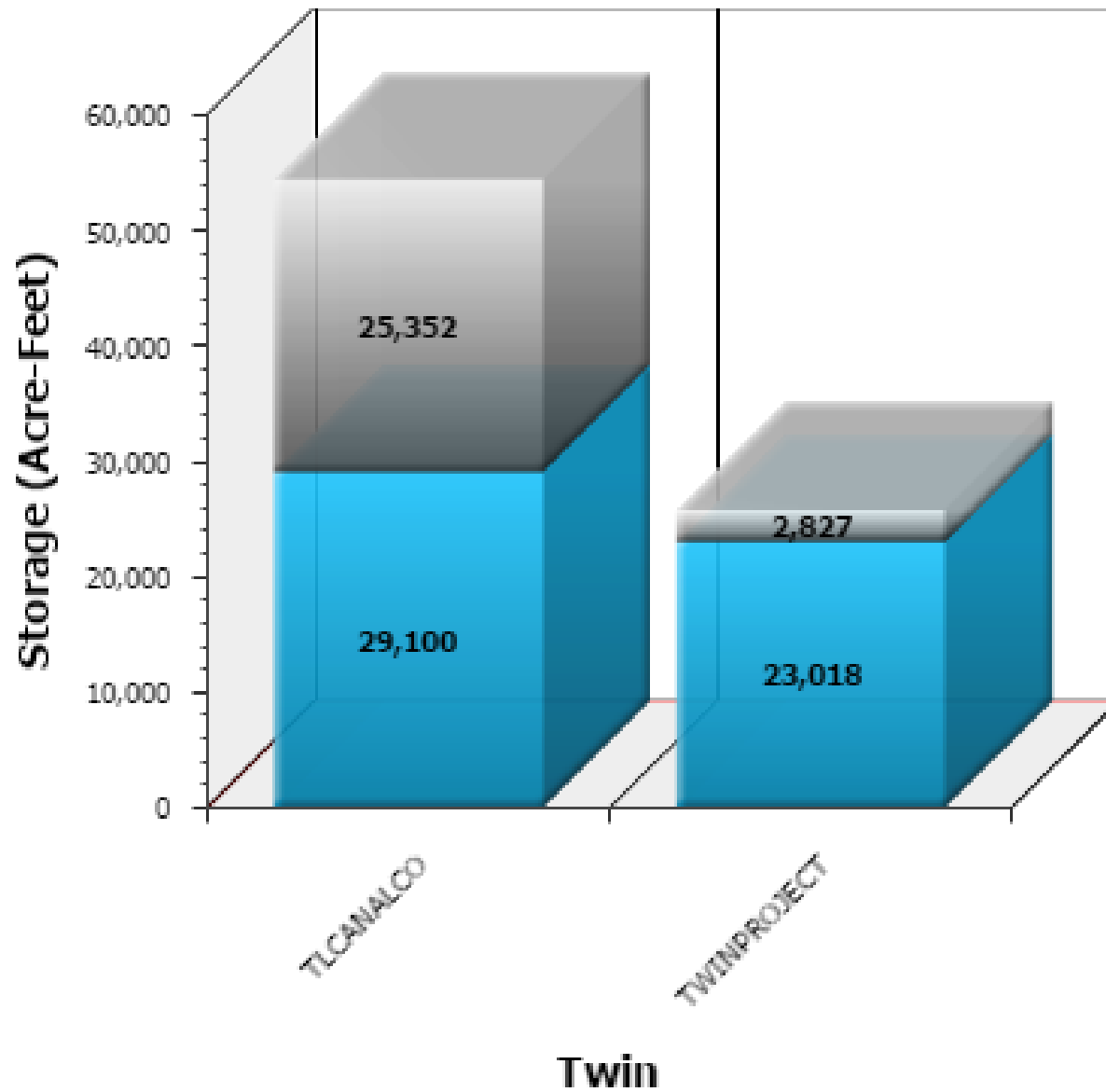


PUEBLO RESERVOIR

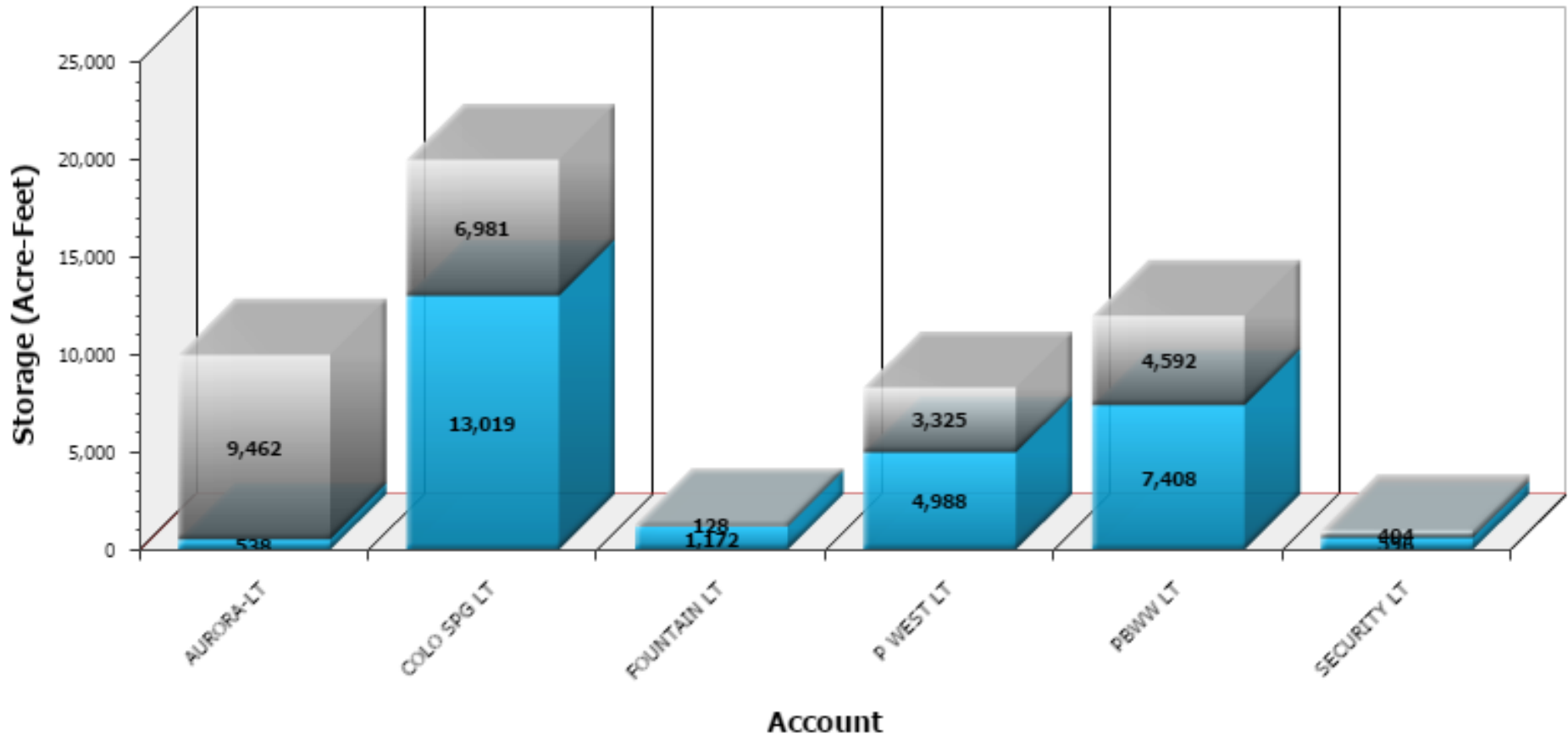




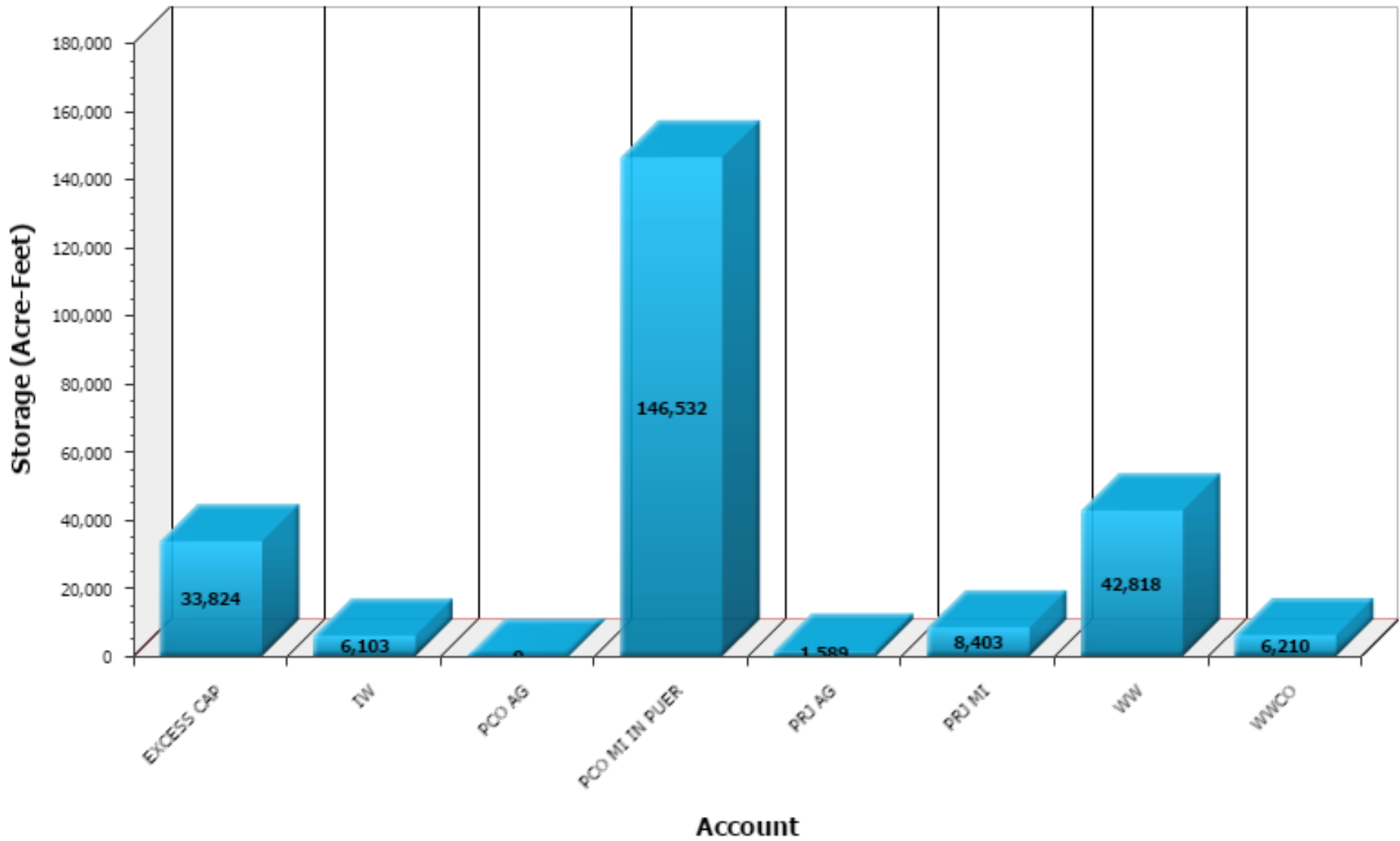
RECLAMATION



RECLAMATION

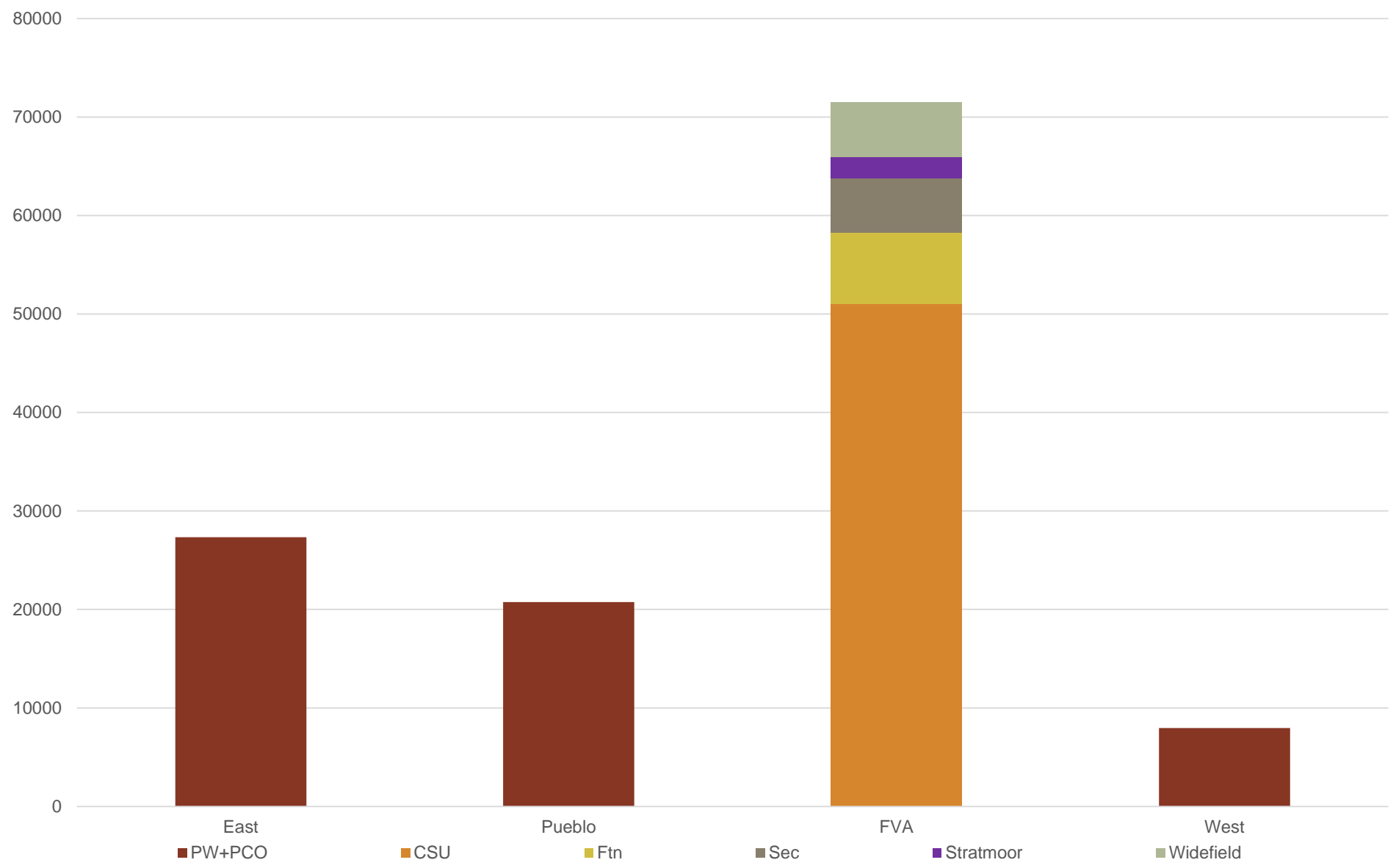


RECLAMATION



RECLAMATION

First Use Project + PCO Municipal Water



March 31, 2017

Total M&I PW in the system = 131,558

- **EAST = 27,328**
- **WEST = 7,960**
- **PUEBLO = 20,752**
- **OTHER = 4,019**
- **FVA = 71,499**
 - **CSU = 51,021**
 - **Fountain = 7,253**
 - **Security = 5,490**
 - **Stratmoor = 2,144**
 - **Widefield = 5,591**



RECLAMATION

As of April 16, 2017

Project Reservoirs

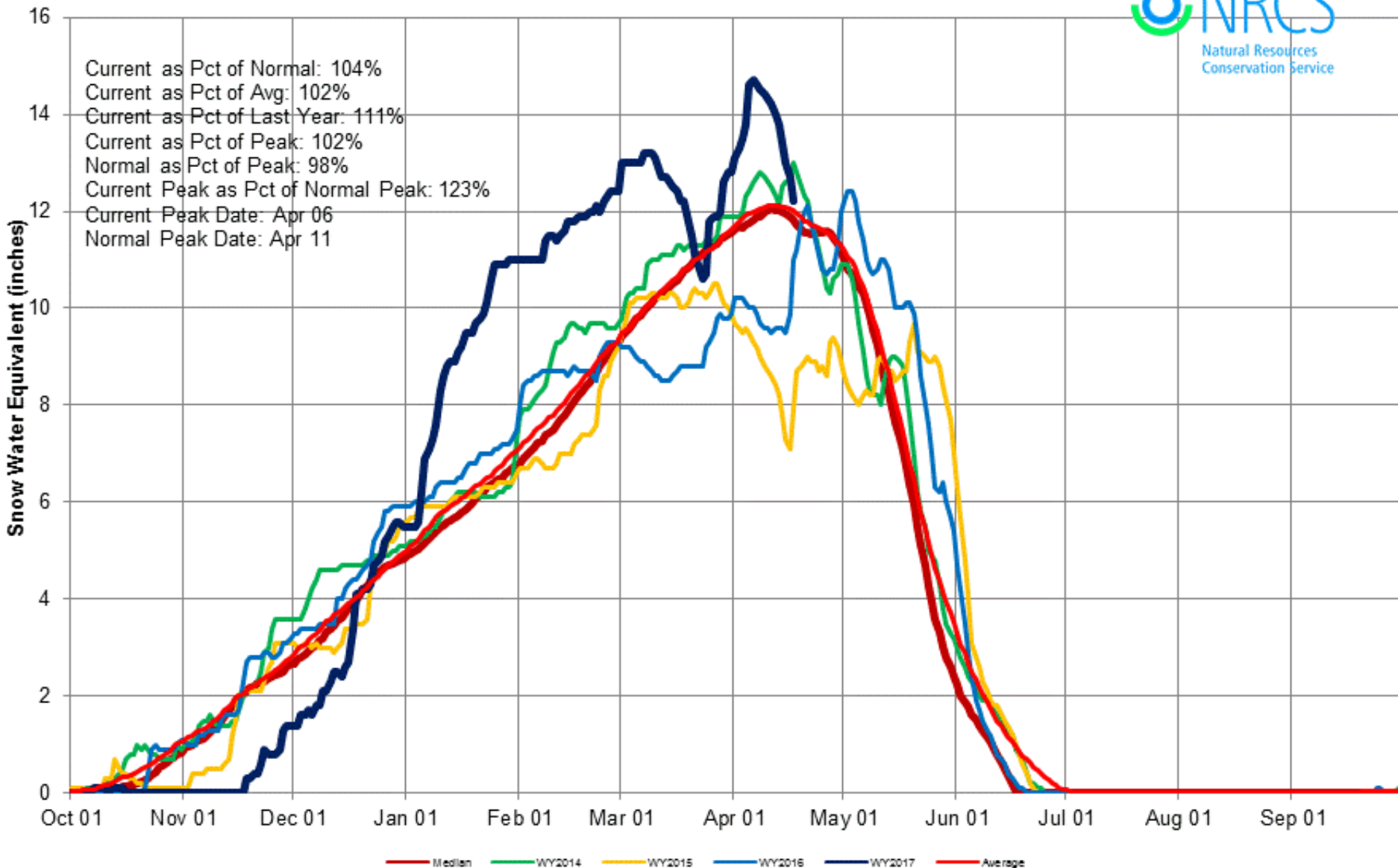
Turquoise	70%
Twin Lakes	105%
Pueblo	122%



RECLAMATION

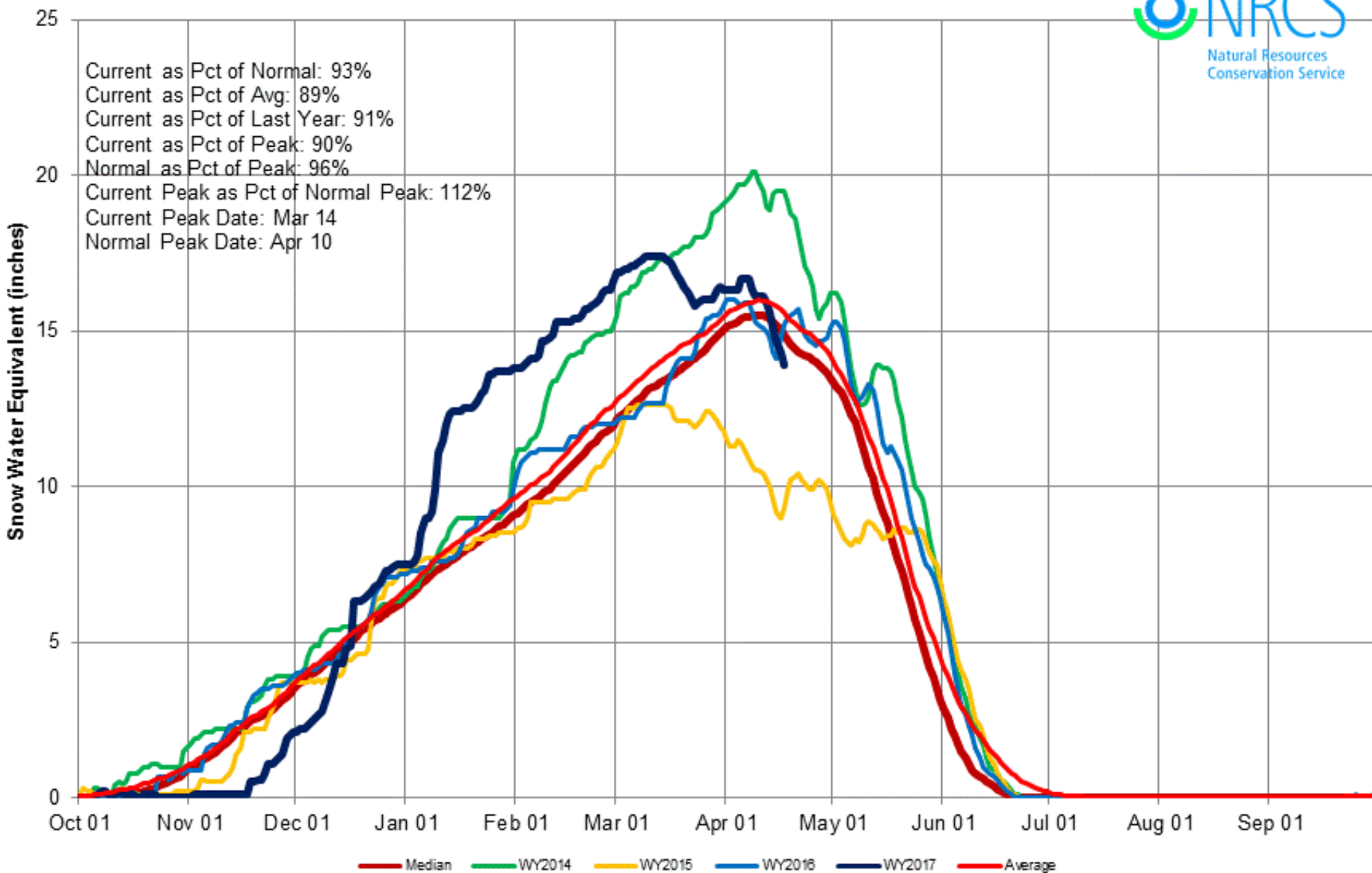
Arkansas River Basin Time Series Snowpack Summary

Based on Provisional SNOTEL data as of Apr 17, 2017

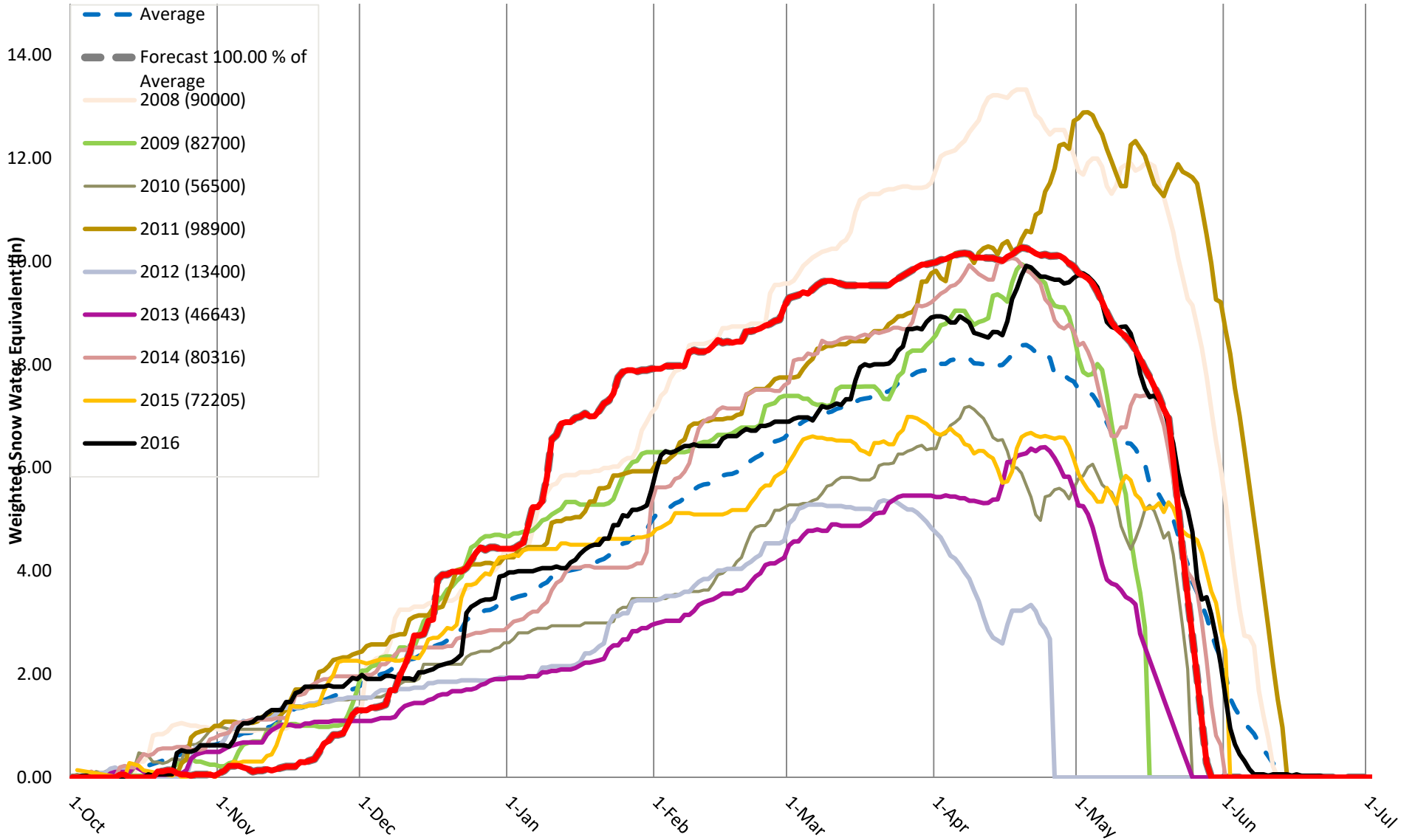


Upper Colorado River Basin Time Series Snowpack Summary

Based on Provisional SNOTEL data as of Apr 17, 2017



Fryingpan Weighted by VIPER results





Forecast
April 1 78,000 a/f

RECLAMATION