

RECLAMATION

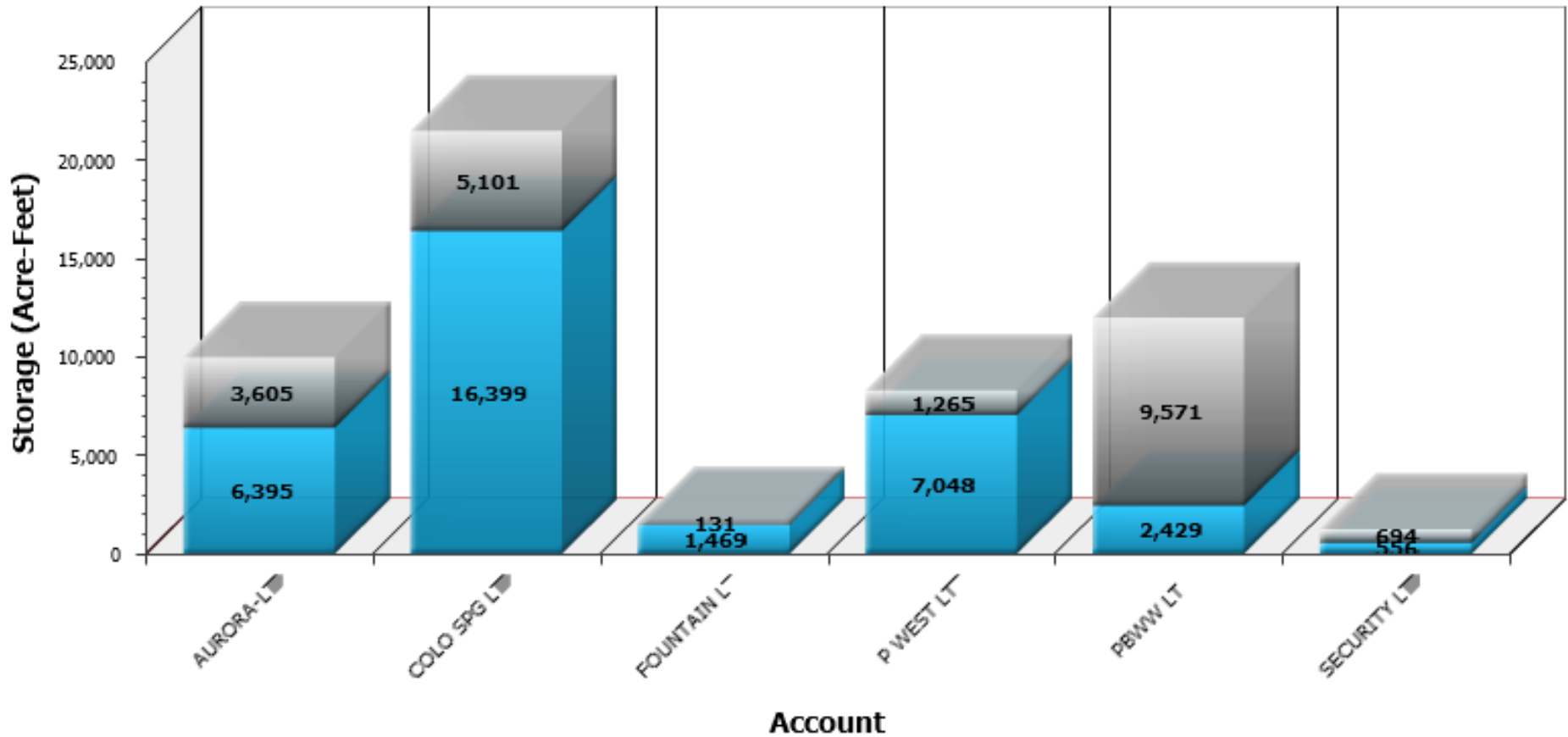
Managing Water in the West

As of October 13, 2020

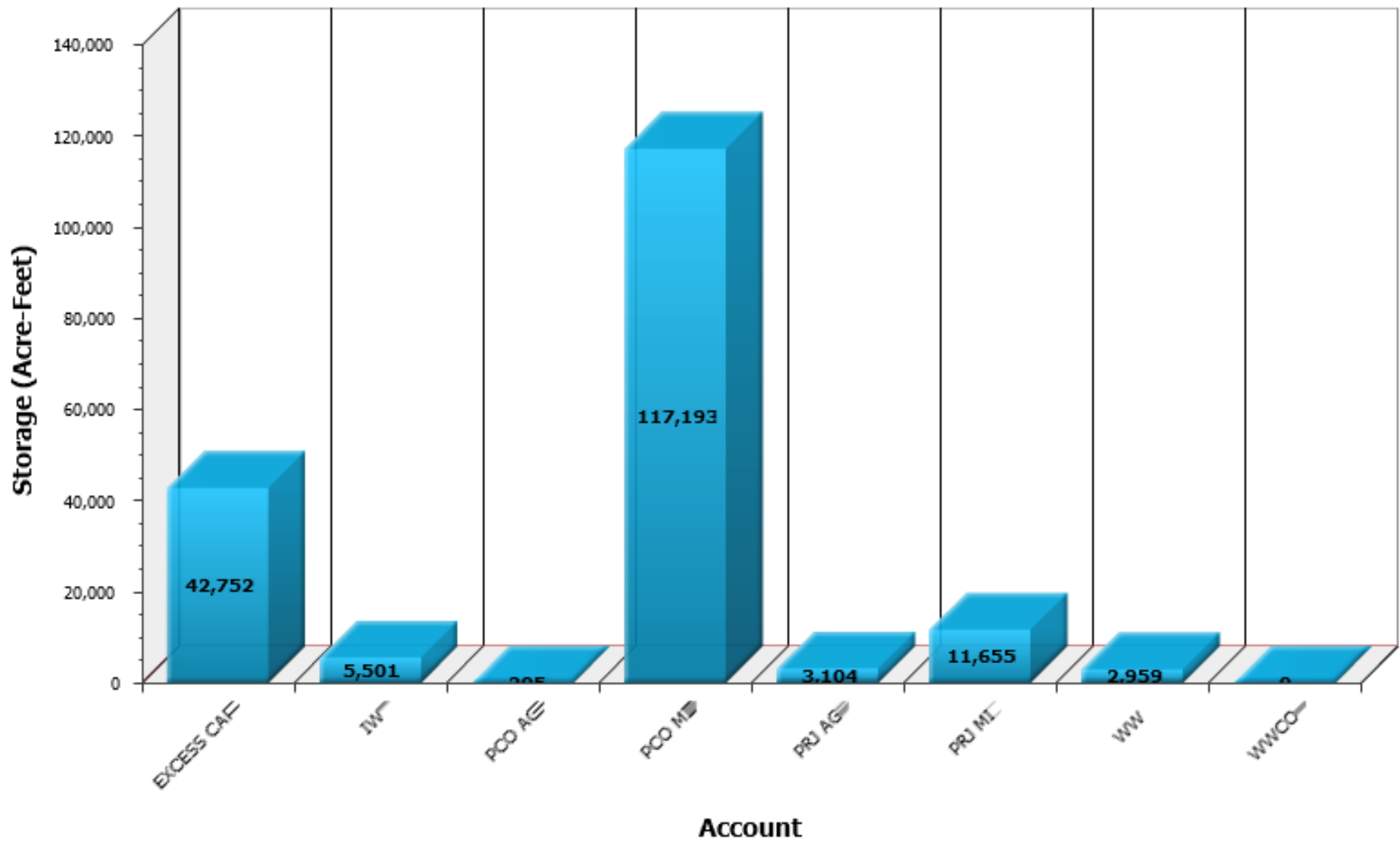
- 178,014 a/f stored in Pueblo
- 132,470 a/f of Project water
- 42,752 a/f of excess capacity water
- 2,959 a/f of winter water
- 109,944 a/f of Project space in Pueblo
- 30,368 a/f of Project space in Twin & Turquoise




U.S. Department of the Interior
Bureau of Reclamation



RECLAMATION



RECLAMATION



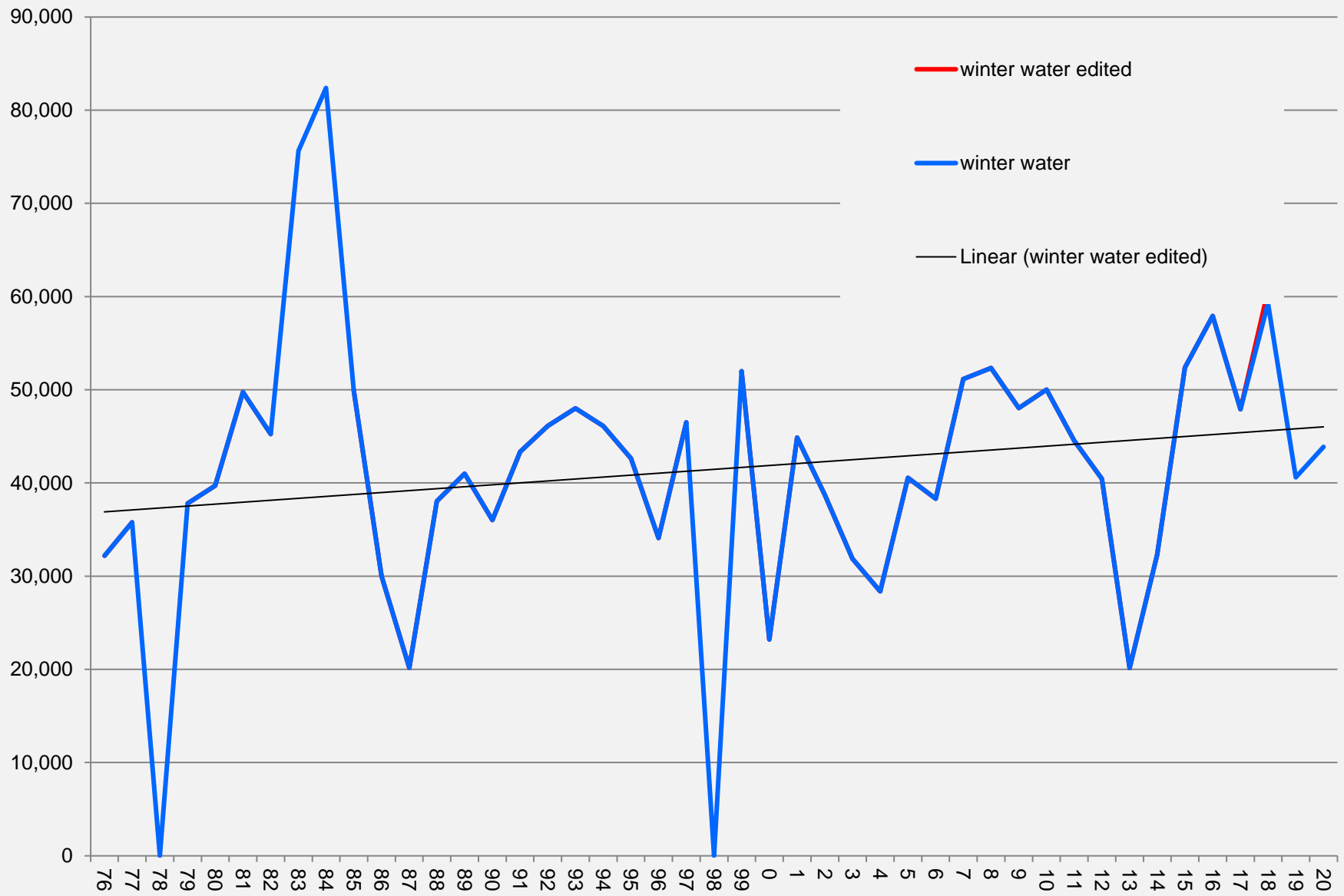
**2019-2020
Winter Water
Stored in Pueblo**

43,866 AF

Average Total

43,302 AF

RECLAMATION



RECLAMATION

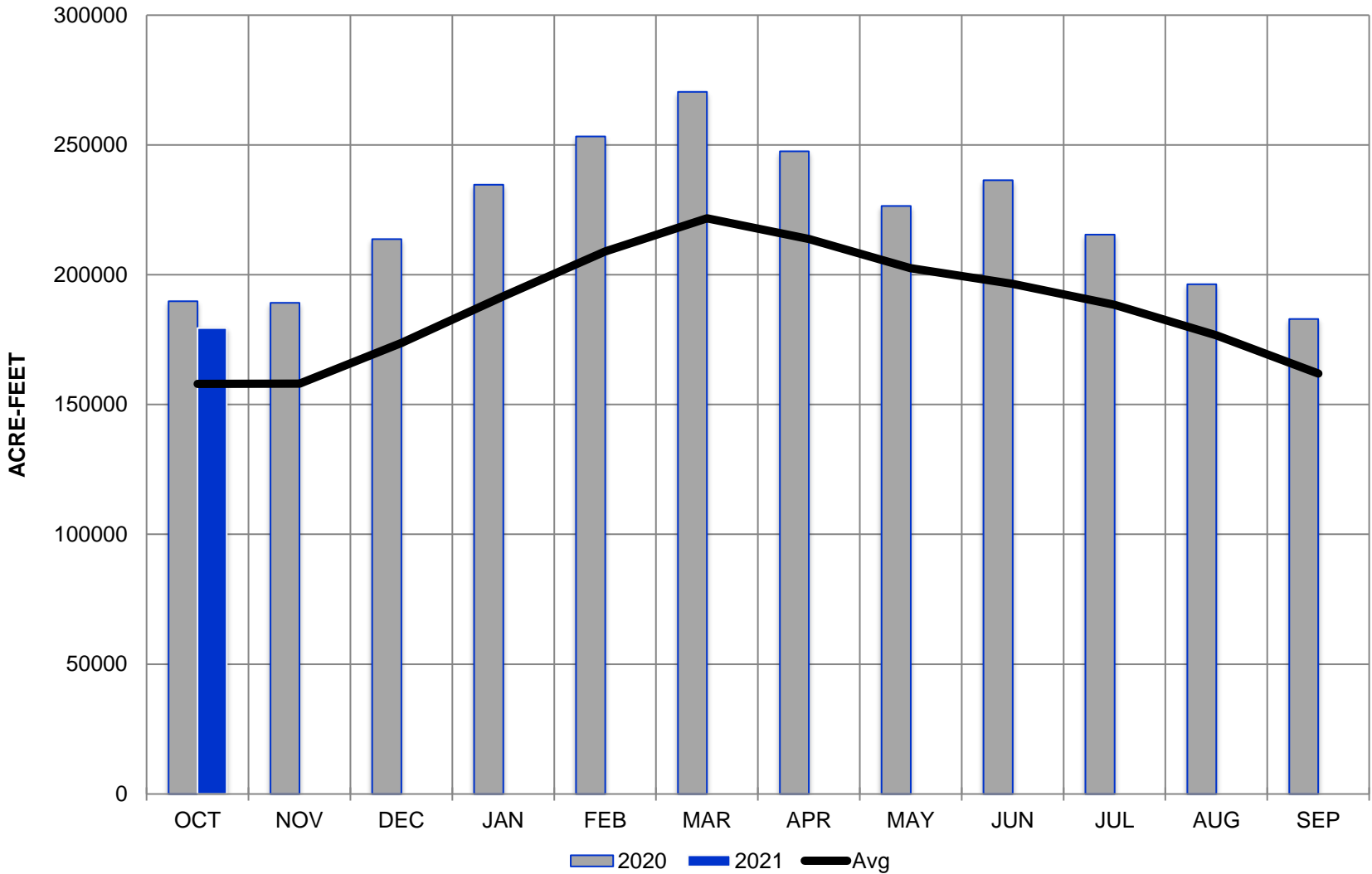
A scenic view of a river flowing through a forested area. The river is in the foreground, with dark, rippling water. The banks are covered in snow, with patches of green grass and small shrubs visible. In the background, there is a dense forest of tall evergreen trees under a clear blue sky. The text is overlaid on the right side of the image.

Storage

As of October 13, 2020

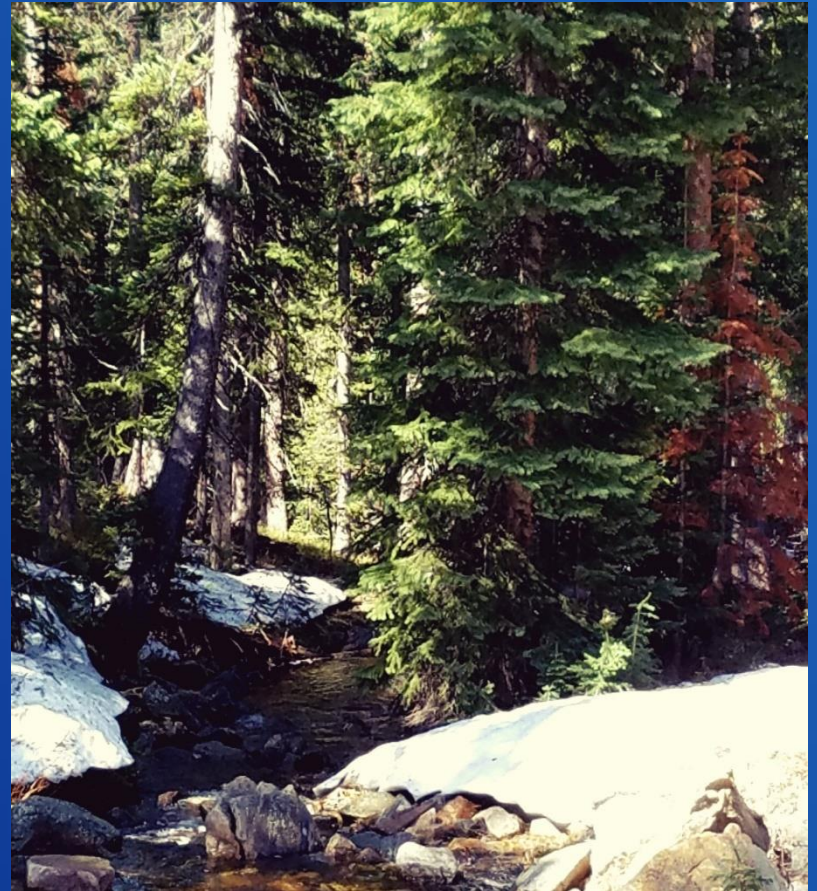
- **Turquoise** **88%**
- **Twin Lakes** **90%**
- **Pueblo** **113%**

PUEBLO RESERVOIR



Winter Operations

- Anticipate moving around 26.7 KAF down from the upper reservoirs beginning mid-Nov. Net 24 KAF in Pueblo
- Winter water ends March 15
- Use of Joint Pool ends April 15
- After April 15, all winter water will be stored up 70 KAF plus what room is available after project and Spill 4 water is accounted for
- Winter and Prj Ag water out by May 1
- Movement of water will be adjusted according to the forecast and customers needs



RECLAMATION

CONTENT	178,014
+ New WW	43,000
+ Project Water	24,000
+ M&I Inflow	24,500
- Total Releases	17,150 (no releases in anticipation of a spill included)
- Evap	<u>5,000</u>

APRIL 15

$$247,364 - 245,373 = 1,991 \text{ AF spill}$$

OUT BEFORE MAY 1

- 2020 W.W.	2,959
- 2020 Ag. Proj. W.	<u>3,104</u>

$$259,402 - 245,373 = -4,072 \text{ AF no spill}$$

**Winter water storage is subject to Article 13 of the USBR/SECWCD contract*

Spill Priorities

Article 13 of the SECWCD/United States Contract.

- Sub article 13.(a) Whenever water is evacuated from Pueblo, Twin Lakes, and Turquoise Reservoirs to meet the necessities of Project flood control, generation purposes, storage of trans-mountain Project water, or native Project water, and operational requirements; except as provided in Subarticle 13.(b) below, the water evacuated shall be charged in the following order:
 1. Against water stored under contracts for if-and-when available storage space for entities which will use the water outside the District boundaries.
 2. Against water stored under contract for if-and-when available storage space for entities which will use the water within the District boundaries.
 3. Against any winter storage water in excess of 70,000 acre-feet.
 4. Against water stored under contracts with municipal entities within the boundaries of the District, which water is neither Project water nor return flow from Project water and which is limited to 163,100 acre-feet, less any Project water purchased and stored by municipal users. This evacuation will be charged pro rata against all water stored under such like contracts at the time of evacuation.
 5. Against winter storage water not in excess of 70,000 acre-feet.

Project water does not spill!

RECLAMATION